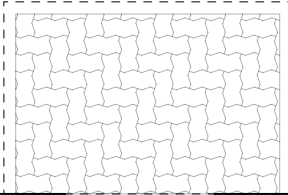


Front Patio w/roof above
6' x 4'



3'6" x 3'6"
opener

2'0" x 2'0"
opener

3'6" x 3'6"
opener

4'0" bi-fold

Bath
5'-0" x 5'-9"

2'4" door

Kitchen
9'-2" x 11'-8"
107 sf

Up

8' ceiling
9'-11" ceiling

Dining
10'-4" x 11'-4"
130 sf

Living
12'-4" x 10'-10 1/2"
152 sf

2'6" x 4'0"

sconce

sconce

sconce

5'0" x 6'8"
5'0" x 1'8"

4'0" x 4'0"
slider
4'0" x 1'6"

Back Patio w/roof above
6' x 4'

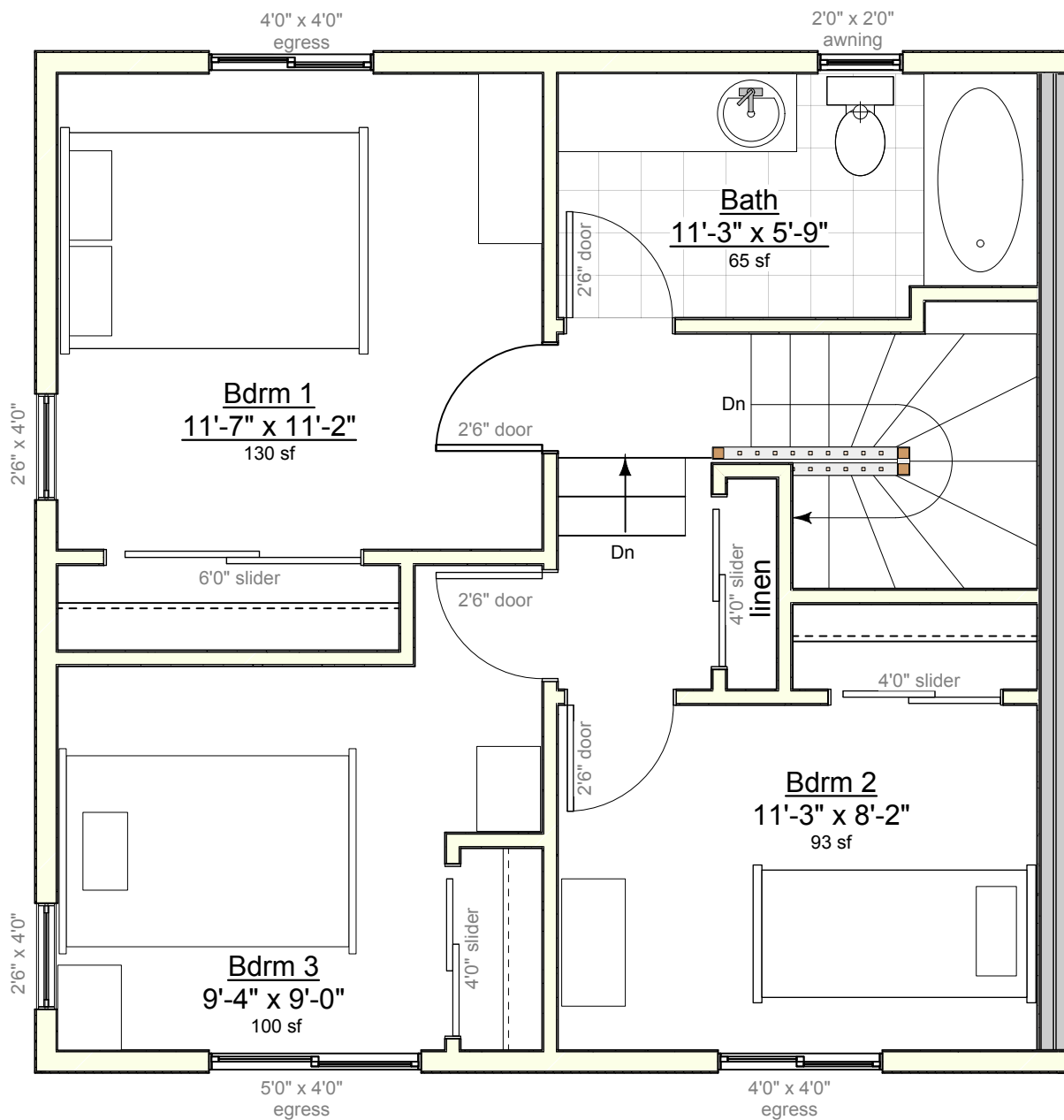


1

Bldg 4,5,6,7,8, 2/3 Bdrm, 1st Floor
1/4"=1'-0"

9/12/2014





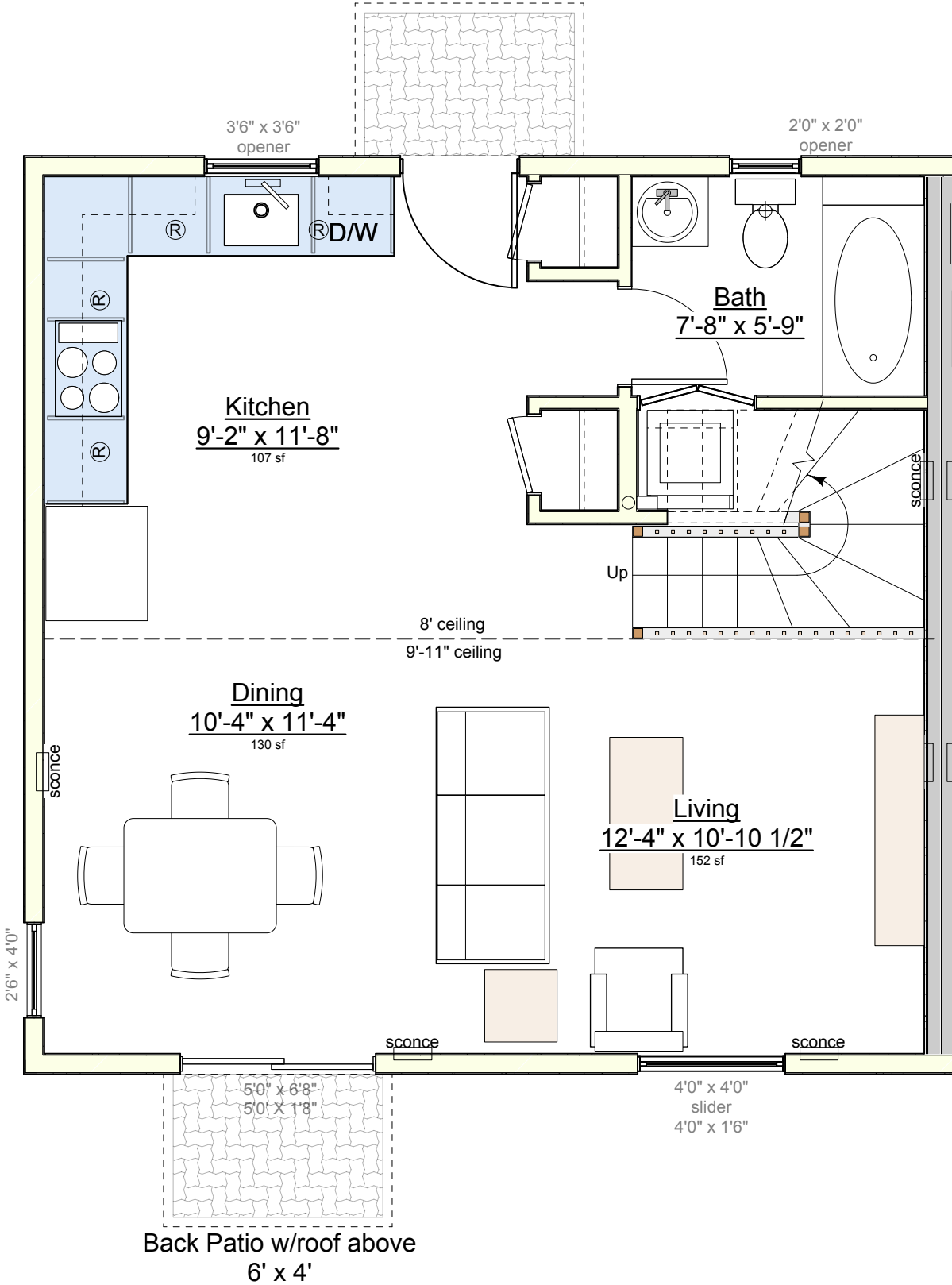
1

Bldg 4,5,6,7,8, 2/3 Bdrm, 2nd Floor
1/4"=1'-0"

9/12/2014



Front Patio w/roof above
6' x 4'



1

Bldg 4,5,6,7,8, 2/3 Bdrm, 1st Floor, Option 1
1/4"=1'-0"

9/12/2014

